

Installation Instructions



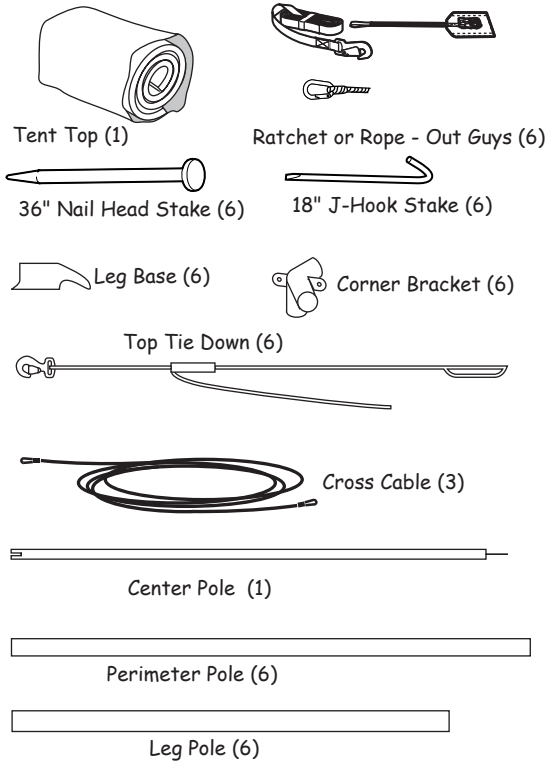
Hex Sierra



TopTec Products, LLC
7061 Highway 221
Moore, SC 29369
Phone: (800) 845-2830
Fax: (800) 921-7750
e-mail: sales@TopTecProducts.com
www.TopTecProducts.com

Form # 20040813
© 2004 TopTec

Sierra Hexagonal Tent Installation Instructions



Please read these instructions in advance of assembly. Always be cautious of wind and weather conditions. Partially assembled tents are large sails in windy conditions. Always tie off frames.

RECOMMENDED TOOLS AND EQUIPMENT

Personal Safety

- Gloves and Hard Hat.

Site Transport

- Hand Truck for Moving Components.

Frame Assembly

- Various wrenches and other types of tools (varies according to tent size)
- Tent jack for raising frame to install legs.
- Ladder - Minimum six (6) foot tall.

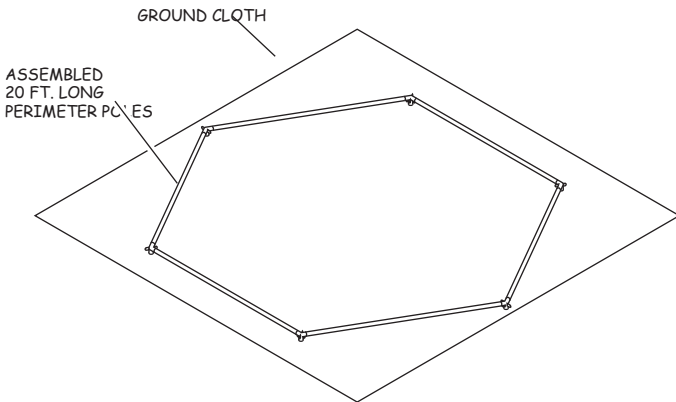
Stake Installation and Removal

- 1" capacity rotary hammer for drilling holes in pavement for stakes.
- An 8 to 16 pound sledge hammer.
- 24" Pipe Wrench for spinning stakes out of wet soil.
- Mechanical stake puller.

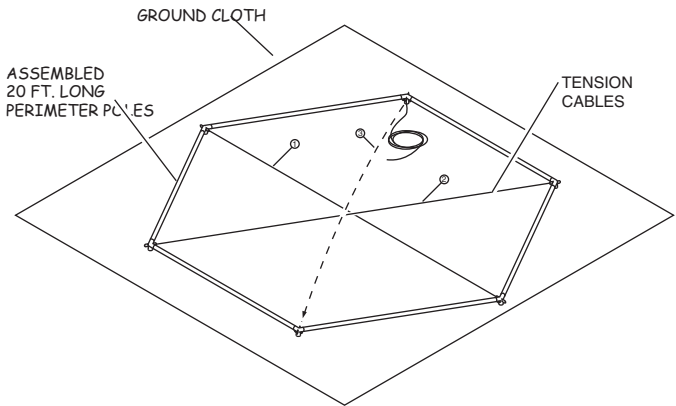
Top Installation

- Ground cloths to protect vinyl from dirt and abrasion.
- Cleaning supplies to remove any marks acquired during installation.

Components for the Hex tent installation are as shown above.



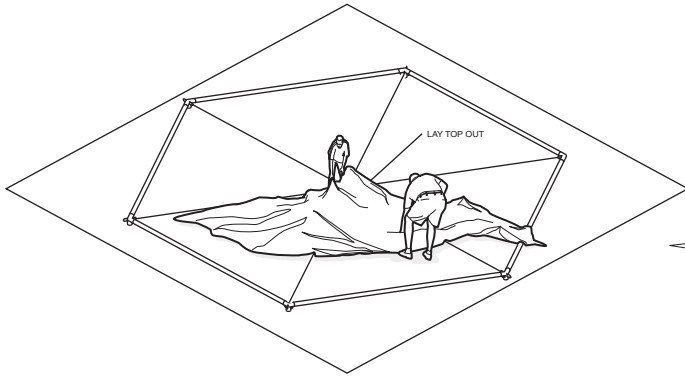
Step 1. Lay ground cloth over desired location of tent being installed. Arrange poles and corner brackets in sequence as shown above.



Step 2: Stretch cables to opposing corners as shown in diagram above.

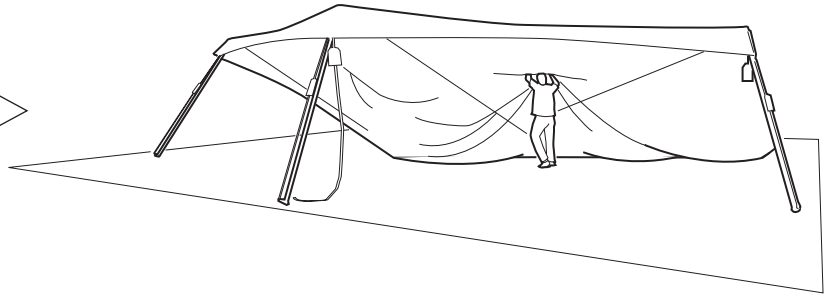
Note: Remember location of top cable for center pole installation (Step 5)

Sierra Hexagonal Tent Installation Instructions

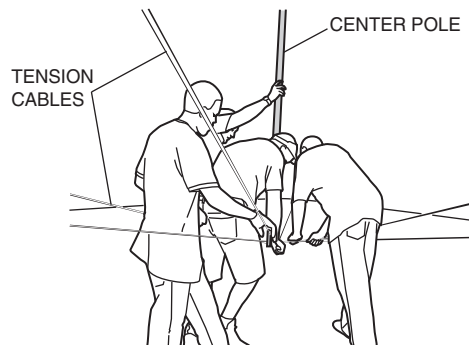


Step 3: Lay out top over frame and cables making sure loose portion of top stays in the center. Pull corners of the top over the frame corners and pull the web loop over the tab of the corner bracket.

BEGIN RAISING TENT BY PROPPING UP THREE LEGS.

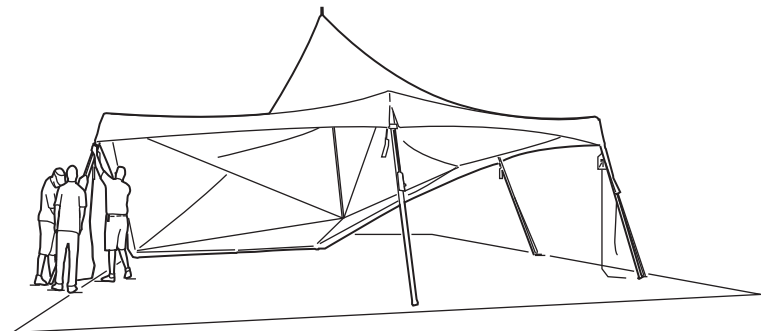


Step 4: Install any three legs in succession. Attach cam buckle straps by clipping one end to the ring on the corner of the top and looping the other end over the tab on the leg base. Pull snug.



Step 5: Raise top as shown in Step 4 and install center pole by placing pin through the reinforced hole in the tent top. Next, place the center pole base with roller on the top cable. Roll the base toward the center while pushing upward on the center pole. Complete center pole installation by pushing the remaining two cables under their respective grooves in the center pole. Use D-Clasp pin supplied with the center pole to secure the cables to the center pole base.

Note: If using a flag, it should be installed on the center pole prior to raising.



Step 6: Continue raising tent by installing remaining legs in succession. Attach cam buckle straps at each leg location to pre-tension the top.

Sierra Hexagonal Tent Installation Instructions

Step 7: Complete installation by attaching out guy ropes or ratchet straps to the connecting points on the corner brackets. Fasten velcro over corners to cover webbing. Secure them to appropriate sized stakes. Pull cam buckle straps completely tight to fully tension the top. Make sure all legs are straight and center pole is plumb. Center pole can be adjusted by pulling on base.



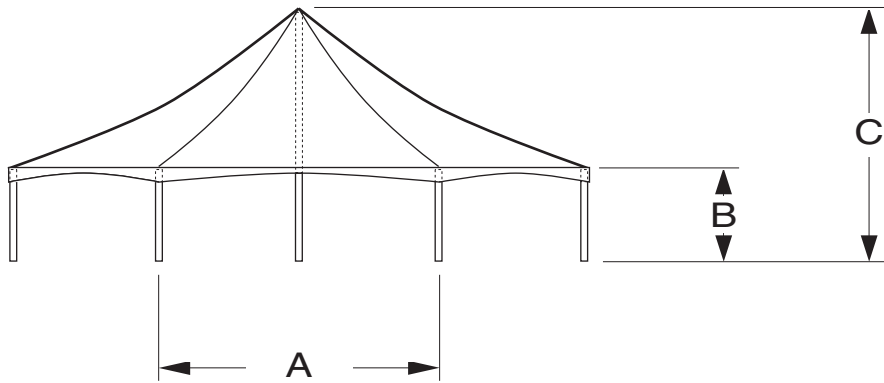
Step 8: Installed Tent Inspection

1. Staking - Check all stakes for signs of movement.
2. Tensioning - Check all ropes for proper tension and make sure that the tent top is set for proper drainage.
3. Poles - Check that all poles are properly aligned, securely tied and structurally sound.
4. Sidewalls - Check that they are properly secured as needed.
5. Special Considerations - Make sure that the installation is in compliance with all local building, fire and public safety codes.



During inclement weather, particularly when the tent is in use, experienced tent personnel should be present to ensure the security of the equipment and those using it. All parties must be aware of the limitations for safe occupancy of the tent. The tent renter must retain the right to declare the tent unsafe for occupancy. Always follow manufacturer's instructions and warnings as they take precedence over any conflicting information contained in these instructions.

Sierra Hexagonal Tent Installation Instructions



Specifications:

Size (feet)	Pitch	No. Legs	No. Ropes or Straps	No. Stakes	Leg Spacing "A"	Leg Height "B"	Overall Height "C"	Square Feet
20' Hex	6'6"	6	6	6	10'	8'	14'6"	260'
40' Hex	13'	6	6	6	20'	9'2"	22'3"	1039'

Anchoring Requirements (Non-Certified Tents)

Non-certified tents are not engineered to meet specific wind loads. Wind loads are approximate and are generally rule of thumb calculations used in the industry based on actual field experience. Windload of a non-certified tent will vary to a maximum of approximately 30 mph to 50 mph dependent upon the style or type of tent. The structural integrity of the tent may exceed the soil's holding capacity even at wind loads of 30 mph to 50 mph.

Frame tents will require approximately 1000 to 2000 lbs of holding power per anchor location (dependant on the style and size of tent). For safety of all occupants, evacuation is recommended if weather becomes severe.

Severe storms have micro bursts of wind that may be recorded far in excess of the storms highest winds. The installer is responsible for properly securing the temporary structure (tent). Soil conditions will vary and the wind loads that the temporary structure can handle could be significantly below its windload capabilities.

Hex Size	Sq. Ft.	PSI	Safety Factor	Anchor Locations	Holding Power Required at Each Anchor Location
----------	---------	-----	---------------	------------------	--

20 x 20	260	1664	1	6	277 lbs.*
---------	-----	------	---	---	-----------

40 x 40	1,039	6,650	1	6	1,108 lbs.*
---------	-------	-------	---	---	-------------

* Minimum amount of holding power required at each anchor location